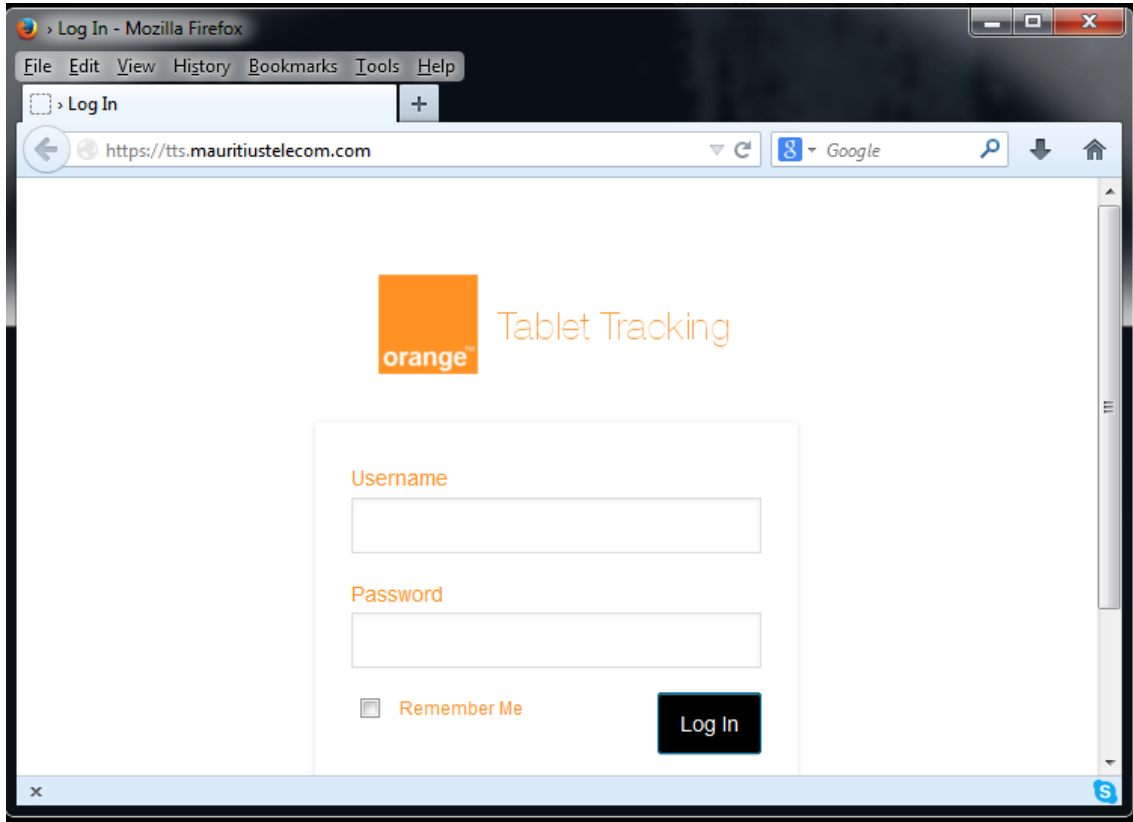
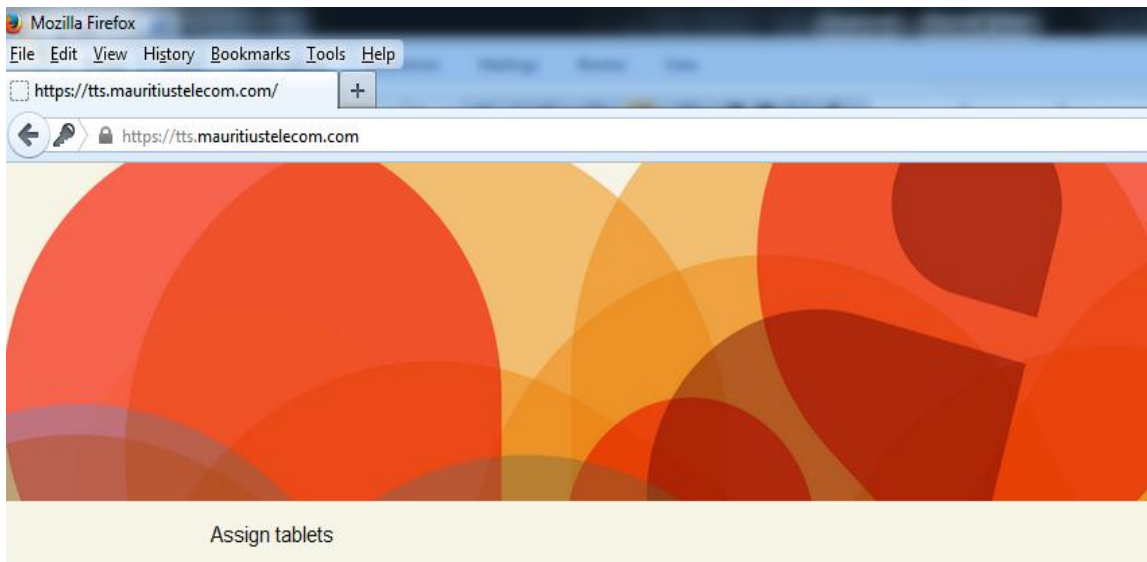


# How to register your Trustport Mobile Security

1. On your computer go to <https://tts.mauritiustelecom.com>



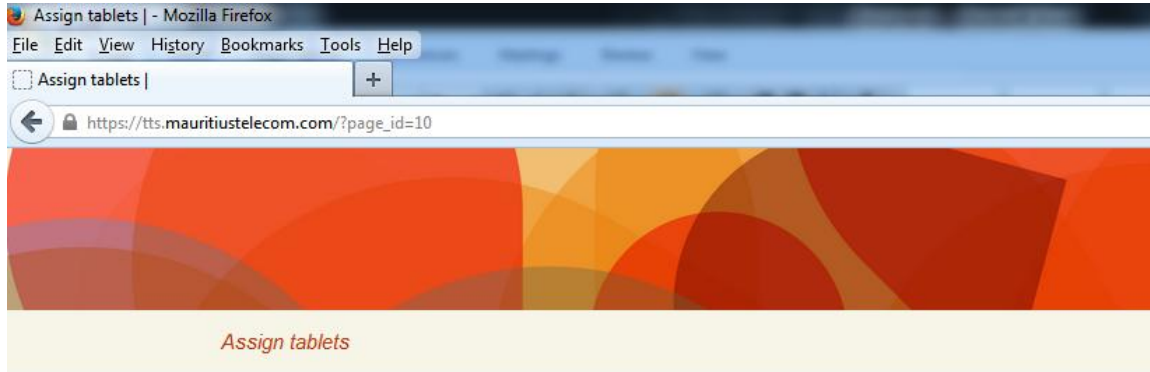
2. Enter the **USERNAME** and **PASSWORD** as provided by your school.
3. Go to **ASSIGN TABLETS** top left.



## Welcome

Welcome to Orange Tablet tracking system!

4. Select **ASSIGN TO: Teacher** and select the desire tablet based on the **Serial Number**, found on the back of the tablet, right side and click on **#Click here to assign**.



## Assign tablets

Assign to:  Student  Teacher

Enter serial no./name:

#	SERIAL NO.	ASSIGNED TO
1	8880312022579	<input type="text"/>
2	8880312022555	<input type="text"/>
3	8880312023563	# Click here to assign
4	8880312021207	<input type="text"/>

5. Fill in the required fields and click on **ASSIGN TO TEACHER** when finished. (The iProf Monitor license key is found on the back of the tablet, left side.)

Tablet serial no: 8880312023563

iProf Monitor License key \*:  -  -  -  -

Please see the back of the tablet to obtain the license key.

**Teacher information**

First Name\*:  Last Name\*:  Other Names:

National ID\*:

Contact number 1\*:  Contact number 2:

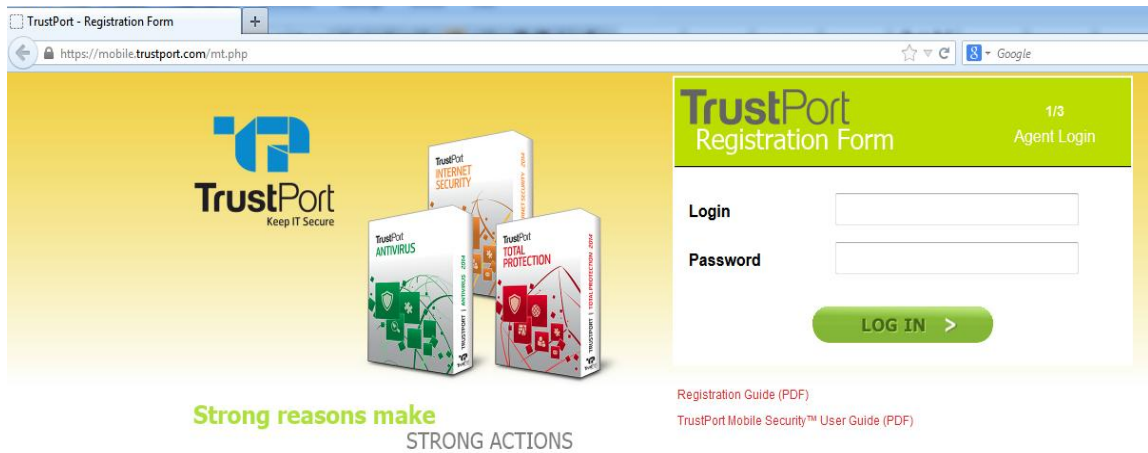
Close

6. Once you click on **ASSIGN TO TEACHER**, a window containing the **TRUSTPORT REGISTRATION NUMBER** will appear. *Write down or copy this registration number.*

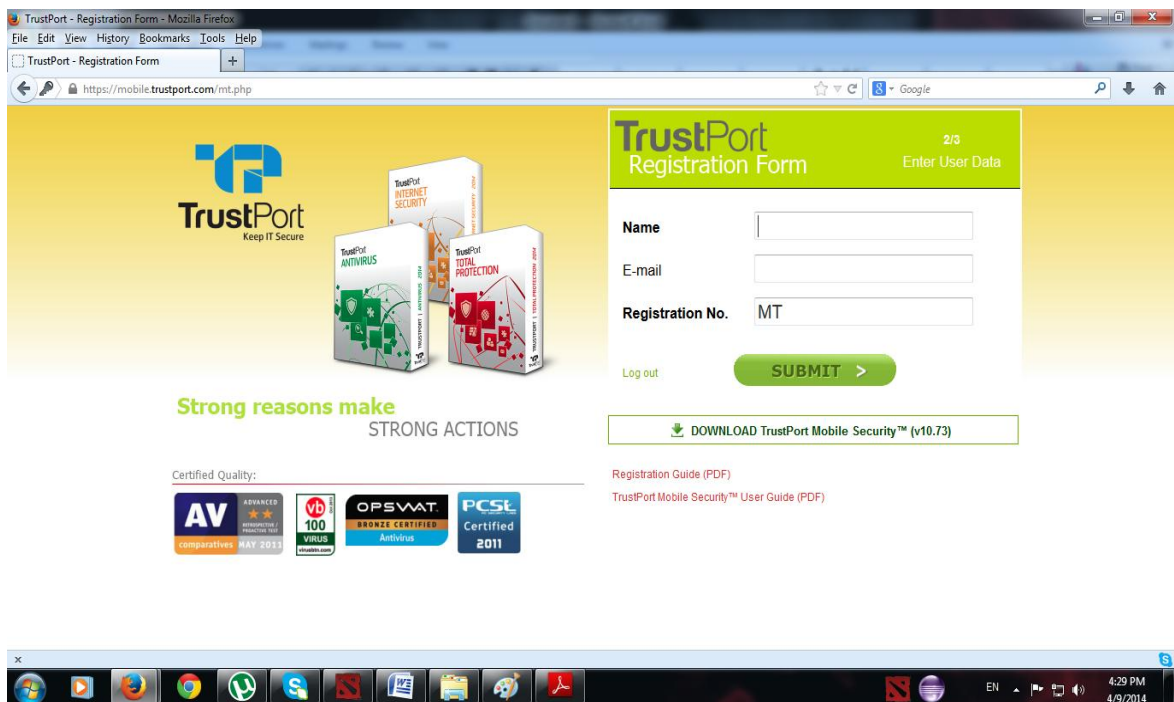
7. Now go to <https://mobile.trustport.com/mt.php>

**LOGIN: mt**

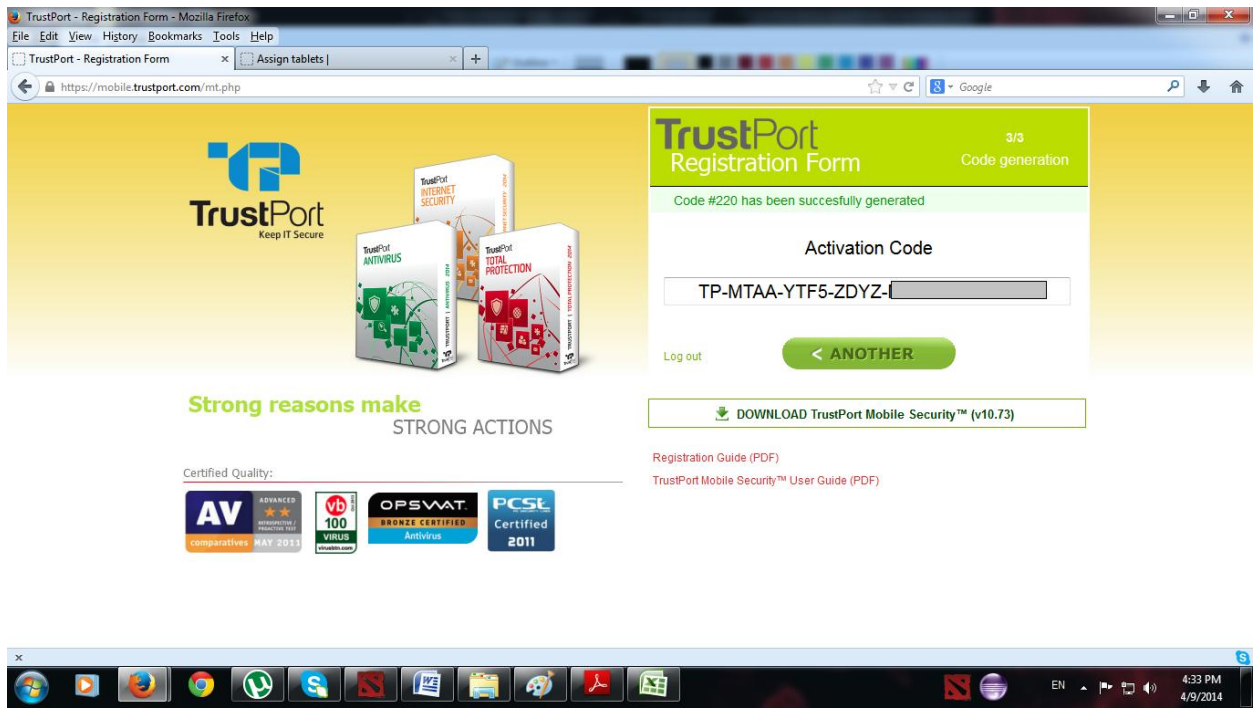
**PASSWORD: Atlas**



8. Enter your **Name** and **Email** and the **TRUSTPORT REGISTRATION NUMBER** that you have copied from the telecom website.



9. Once you click on submit, you will receive the **ACTIVATION CODE**.



10. Now open the **TRUSTPORT MOBILE SECURITY** software on your tablet and insert the **ACTIVATION CODE**. (Must be connected to Internet when doing this step)